

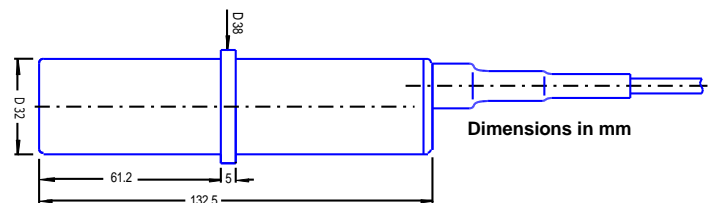
TECHNICAL INFORMATION

flow-captor Type 4114.73



The flow-captor type 4114.73 is a compact and universal usable flow monitor with a cylindrical housing. Available for AC and DC applications. The voltage range is from 90 to 250V AC/DC. Its operation is based on the calorimetric principle.

- Large operating voltage range for AC and DC
- High accuracy also under low flow conditions
- Simple installation by union nut
- Rugged stainless steel version
- LED-display for set-point
- **ISO 9001 : 2000** certified manufacturing



Technical data

Type	4114.73
Medium	liquid and pasty (aggressive media on request)

Sensor data

Measuring range	adjustable from 2 to 200 cm/s (related to water)
Medium temperature	-10°C to +80 °C
Ambient temperature	-10°C to +60 °C
Adjustable potentiometer	logarithmical to flow rate
Linearity deviation	< 0,5% / K
Hysteresis	< 15%

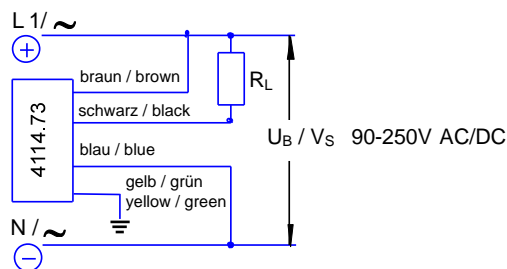
Mechanical data

Protection class	IP65
Sensor head and housing	stainless steel WN 1.4305 (V2A, 303), alternative: WN 1.4571 (V4A, 316 Ti)
Sensor head sealing	FP (VITON)
Thread of union nut	G 1 ¼ A SW 50 mm DIN 259 ISO 228
Pressure	max. 30 bar (3000 Kpa)

Electrical data

Operating voltage	90 - 250V AC/DC
Switching current	max. 150 mA
Power consumption	max. 3 W
Electrical connection	2 m moulded oilflex cable, 4 x 0,5 mm ²
LED	2-colored: green: flow rate > setting value red: flow rate < setting value

Connection diagram



weber

Sensors Ltd. Strohdreich 32 D-25377 Kollmar Tel.: +49 4128-591 Fax: -593

Member of the captor Group

eMail: info@captor.de • www.captor.de

REV: AE / 01.02.06
sgd.:Wip./ Wil

Page 1 / 1