



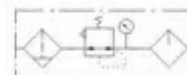
AC2000-02

AC4000-04

Ordering Code

A	C	3000	03	
Series A series	Function code F.R.L Combination	Specification Code 1000 2000 3000 4000 5000	Port Size M5:M5×0.8 01:G1/8" 02:G1/4" 03:G3/8" 04:G1/2" 06:G3/4" 10:G1"	Drain Type Blank:Manual D:Auto Drain Type (Available for 2000 or above)

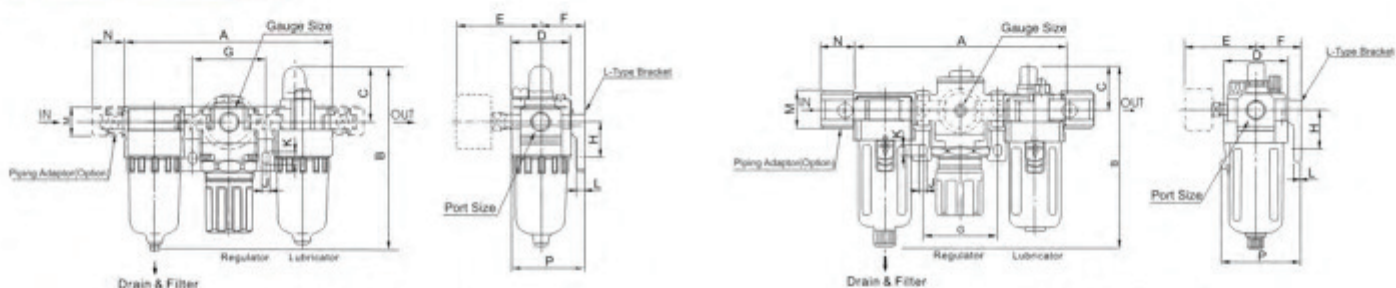
Graphic Symbol



Specification

Model	AC1000-M5	AC2000-01	AC2000-02	AC3000-02	AC3000-03	AC4000-03	AC4000-04	AC4000-06	AC5000-06	AC5000-10	
Rated Flow	90	500	500	2000	2000	4000	4000	4500	5000	5000	
Port Size	M5	G1/8"	G1/4"	G1/4"	G3/8"	G3/8"	G1/2"	G3/4"	G3/4"	G1"	
Filter Precision	25 μ										
Highest Working Pressure	1.0MPa										
Ensured pressure Resistance	1.5MPa										
Operating Temperature Range	5~60℃										
Range of Adjustable Pressure	0.05~0.7MPa					0.05~0.85MPa					
Recommended Oil Use	ISO VG 32										
Container Material	Polycarbonate										
Protective Cover	Not Available					Available					
Drain Function	Differential Drain					Differential Drain/Automatic Drain					
Valve Type	With Over flow										
Composing Elements	Filter	AF1000-M5	AF2000-01	AF2000-02	AF3000-02	AF3000-03	AF4000-03	AF4000-04	AF4000-06	AF5000-06	AF5000-10
	Regulator	AR1000-M5	AR2000-01	AR2000-02	AR3000-02	AR3000-03	AR4000-03	AR4000-04	AR4000-06	AR5000-06	AR5000-10
	Lubricator	AL1000-M5	AL2000-01	AL2000-02	AL3000-02	AL3000-03	AL4000-03	AL4000-04	AL4000-06	AL5000-06	AL5000-10

Overall Dimensions



AC1000~2000

AC3000~5000

Dimension Sheet

Model	Port Size (G)	A	B	C	D	E	F	G	H	J	K	L	M	N	P
AC1000	M5	91	84.5	25.5	25	26	25	33	20	4.5	7.5	5	17.5	16	38.5
AC2000	G1/8"~G1/4"	140	125	38	40	56.8	30	50	24	5.5	8.5	5	22	23	50
AC3000	G1/4"~G3/8"	181	156.5	38	53	60.8	41	64	35	7	11	7	34.2	26	70.5
AC4000	G3/8"~1/2"	238	191.5	41	70	65.5	50	84	40	9	13	7	42.2	33	88
AC4000-06	G3~4"	153	193	40.5	70	69.5	50	89	40	9	13	7	46.2	36	88
AC5000	G3/4"~G1"	300	271.5	48	90	75.5	69.8	105	50	12	16	10.5	55.5	40	115